

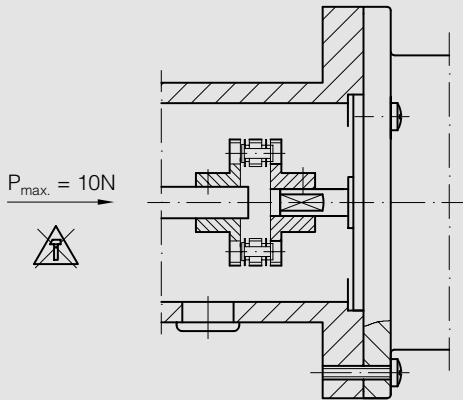
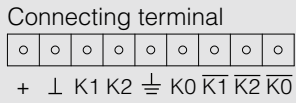
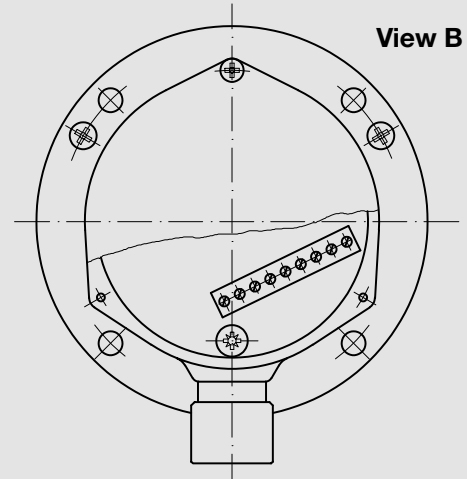
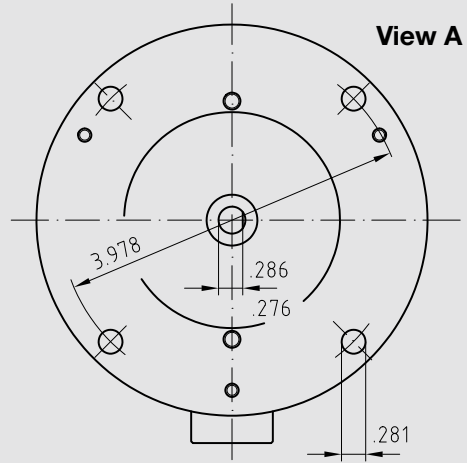
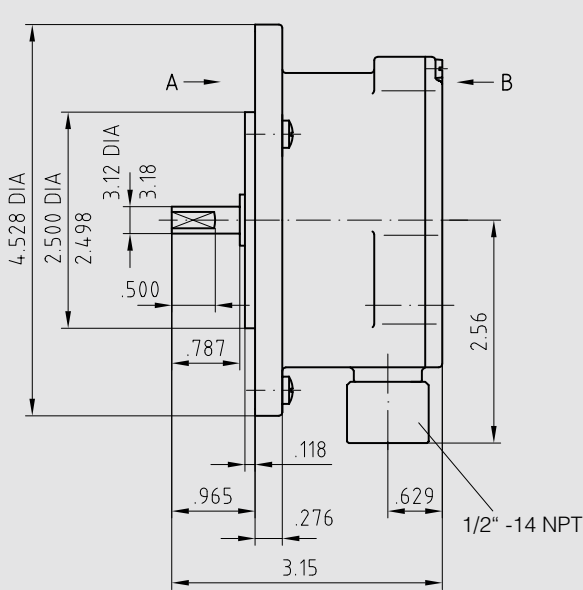
Important notes

- The incremental encoder **AE 8** is an opto-electronic **precision speed measurement device** which must be handled with care by skilled personnel during transportation, mounting and operation.
- The incremental encoder **AE 8** with a solid shaft should be driven through the HÜBNER K 35 spring disk coupling (accessory), that can be pushed onto the shaft without axial loading. If shaft eddy currents occur in the motor shaft, it is recommended to use an insulated coupling like the Hübner spring disk coupling K 35 with insulated hub.

Coupling components must not be driven onto the shaft with improper force (e. g. hammer impacts), because of the risk of damaging the ball bearings.
- The device is manufactured according to **quality standard** DIN ISO 9001. **EU Declaration of Conformity** meeting Council Directive 89/336/EEC art. 10 and annex 1 (EMC Directive).
- Do not connect outputs to **supply voltage**:
!!! Danger of Damage !!!

Please, beware of possible voltage drop in long cable leads (inputs and outputs).
- HÜBNER cable **HEK 8** is recommended. As a substitute a shielded twisted pair cable can be used. It should have an uninterrupted run, with ample clearance to the drive power cable.

Cable terminating resistance 120 Ω for TTL and sinewave.
- The expected **operating life** of the device depends on the **ball bearings**, which are equipped with a permanent lubrication to give approx. 20,000 operating hours ($\geq 10^9$ revolutions).



Max. permissible mounting tolerance when the HÜBNER spring disk coupling is used

